



PROJECT		REF		REV	ITEM CODE	
LOCATION		DATE			PAGE	

## SANITARY WARE SPECIFICATION SHEET

<p>Item Descriptions</p> <p>Dimensions</p> <p>Model</p> <p>Finish / Material</p> <p>Country of origin</p> <p>Manufacturer</p> <p>Supplier</p> <p>Contact Tel/Fax</p> <p>E-mail</p> <p>Website</p>	<p>GROHE (Germany) "Eurosmart Cosmopolitan E Bluetooth" Infra-red electronic basin tap 1/2" with <b>bluetooth</b> module in AC Supply; nominated flow rate <b>4.3 L/min</b> in WELS <b>Grade 1</b>; Registration No. TM 21-0047</p> <p>L144 x W64 x H132 mm</p> <p>36413000</p> <p>Chrome Plated</p> <p>Germany</p> <p>GROHE Limited</p> <p>Acme Sanitary Ware Co. Ltd Mr. Eric Wong/ Mr. Don Yuen (852) 2388-7171 / (852) 2710-8012 acme@acmesanitary.com.hk www.acmesanitary.com.hk</p>	<p>Illustration/ Drawing</p> <p>Technical drawing showing dimensions: 144 (width), 132 (height to spout), 106 (height to base), 107 (spout offset), 22° (spout angle), max.35 (base offset), 400 (total height), 48 (base width), 33 (base depth), 73 (base height), 64 (base depth), 48 (base width), 400 (total height), 26 (base depth), 37 (base width).</p>
<p>"Eurosmart Cosmopolitan E Bluetooth" <u>Infra-red electronic basin tap 1/2" with mixing device</u></p> <ul style="list-style-type: none"> <li>with infrared sensor and Bluetooth module for bi-directional communication for monitoring, configuration and service purpose</li> <li><b>without power supply 36 338 000 (required)</b></li> <li>rapid installation system</li> <li>mixing device with adjustable hot water limiter</li> <li><b>GROHE StarLight</b> finish</li> <li><b>GROHE EcoJoy</b> mousseur 5.7 l/min</li> <li>with integrated solenoid valve</li> <li>integrated non-return valves and dirt strainers</li> <li>with Bluetooth 4.0* for wireless data communication</li> <li>for Apple** and Android devices</li> <li>Bluetooth range (max. 10 m) varies depending on materials used and walls between transmitter and receiver</li> <li><b>monitoring</b></li> <li>password protected products</li> <li>app detects all Bluetooth products in range</li> <li>auto flush cycles and timing last auto flush</li> <li>usage per day over 30 days</li> <li>thermal disinfection cycles and timings last disinfection</li> <li><b>configuration</b></li> <li>detection range and shut off delay</li> <li>auto flush</li> </ul>	<ul style="list-style-type: none"> <li>thermal disinfection</li> <li>cleaning mode</li> <li>2 on/off timers</li> <li>identification by name</li> <li><b>service</b></li> <li>send and save 3 profiles</li> <li>reset to factory or user settings</li> <li>hard and software version</li> <li>CE approved</li> <li>noise classification 1 in accordance with DIN4109</li> <li>type of protection faucet IP 59K</li> <li>Mobile devices and GROHE IR Remote App*** are not included in delivery and have to be ordered separately via an authorised Apple store/store/iTunes or Google Play store.</li> <li>* The Bluetooth word mark and logos are registered trademarks owned by Bluetooth SIG, Inc. and any use of such marks by Grohe AG is under license. Other trademarks and trade names are those of their respective owners.</li> <li>** Apple, the Apple logo, iPod, iPod Touch, iPhone and iTunes are trademarks of Apple Inc., registered in the U.S. and other countries. Apple is not responsible for the function of this device or its compliance with safety and regulatory standards</li> <li>*** Available for free via iTunes app or Google Play store.</li> </ul>	

\* All information of the above is for the reference only. No prior notice is made if any changes.



PROJECT		REF		REV	ITEM CODE	
LOCATION		DATE			PAGE	

## SANITARY WARE SPECIFICATION SHEET



### Easy to clean thanks to the GROHE StarLight chrome coating

Just wipe the tap down with a dry cloth – the ultra smooth surface finish is scratch resistant and ensures a lasting luminous sheen. You'll save plenty of time cleaning while your tap always looks shiny and new.

### GROHE EcoJoy with water-saving function for reduced consumption

GROHE EcoJoy reduces water consumption by up to 50% without compromising on performance. Whenever you turn on your tap, you will enjoy a full jet of water while saving money nonetheless.

WORK SMARTER



for Android™

min. 4" Display  
OS: 4.3 and above

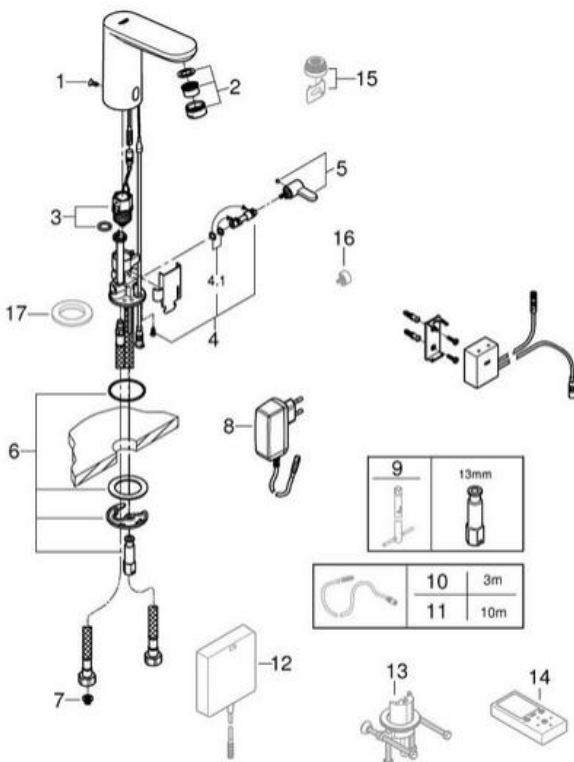


### Apple

iPod® touch (5 th Generation), iPhone® 5, iPhone® 6, iPhone® 6 plus, iPad® mini, iPad® mini 2, iPad® mini 3, iPad® 2, iPad® 3, iPad® 4, iPad® Air, iPad® Air 2

iPod touch, iPhone, iPad and iTunes are Trademarks of Apple Inc., registered in the U.S. and other countries.

The Bluetooth® word mark and logos are registered trademarks owned by Bluetooth SIG, Inc. and any use of such marks by Grohe AG is under license. Other trademarks and trade names are those of their respective owners.



Pos.-nr.	Prod. description	Order-nr.
1	Screws	4283100M
2	Mousseur	48159000
3	Solenoid valve	42469000
4	Mixer spindle	42402000
5	Mixing lever	42401000
6	Mounting set	42400000
7	Dirt strainer	4241300M
8	Mains adaptor	42388000
9	Mounting wrench	19017000*
10	Power extension cable	36340000*
11	Power extension cable	36341000*
12	Switch-mode power supply	36338000*
13	Rotation lock	36276000*
14	Remote control	36407001*
15	Mousseur	36133000*
16	Hidden mixing device	42408000*
17	Escutcheon	36370000*

\* Optional accessories

Note:

\* All information of the above is for the reference only. No prior notice is made if any changes.

註冊號碼 (Registration No.): TM 21-0047



自願參與用水效益標籤計劃 - 水龍頭  
Voluntary Water Efficiency Labelling Scheme - Water Taps



茲證明  
This is to certify that

將下列水龍頭在本計劃內註冊：  
has registered the following water tap under this scheme :

牌子 / Brand : Grohe  
型號 / Model : 36413XXX + 402717040  
種類 / Type : Mixing  
原產地 / Country or Region Origin : Germany (Mixer & Flow Controller)

XXX – denotes the code of colour

在用水效益標籤上展示的標誌 <i>Symbolic Presentation on the Water Efficiency Label</i>	: 1	滴水點 <i>Water droplet(s)</i>
用水效益級別 <i>Water Efficiency Grade</i>	: 1	with additional merit*
耗水量 <i>Water Consumption</i>	: 4.3	公升/分鐘 <i>litres/minute</i>

\*with additional merit of "Automatic closing mechanism"

簽發日期：  
Date of Issue: 24 February 2021

 水務署  
Water Supplies Department



水務署署長(張業駒代行)  
for Director of Water Supplies



水務署  
Water Supplies Department

總部 Headquarters

香港灣仔告士打道七號入境事務大樓 48 樓

48/F, Immigration Tower, 7 Gloucester Road, Wan Chai, Hong Kong



SD 3321/2020 T/J(1125/2020)

電話 :

Tel. :

傳真 :

Fax. :

2824 0578

13 October 2020



**Approval of "GROHE" Sensor Mixer  
(General Acceptance No. C20200906)**

Your letter ref. WRC/2325 dated 20 August 2020 refers.

Having considered the test report ref. J24772A issued on 30 March 2020 by Nutek Systems (HK) Ltd., this Authority accepts that the fitting described below complies with, and its use when correctly installed does not contravene, the Waterworks Ordinance and Regulations.


**Name of Manufacturer:** Grohe AG

**Country of Origin:** Germany

**Brand:** Grohe

**Details of Fitting:** 3/8" Infrared electronic basin mixer

**Model:** 36413XXX  
(where the digits "XXX" denote the code of colour)

**Body Markings:** 

**Expiry Date:** 4 November 2024



This Authority hereby permits the use of the above fitting in fresh water plumbing systems subject to full adherence to Waterworks installation requirements. In particular, you are required to draw your customers' attention to the following requirement-

"The cold water supply to the fitting shall be drawn from the same source that supplies the hot water apparatus so as to provide a balanced pressure and to obviate the risk of scalding in the event of a restriction or failure in the water supply."

"A stop cock or gate valve must be installed at the upstream of the fitting for manual isolation of water supply." AND

"The main voltage operated sensor valve should comply with the electricity safety regulation for applications in bathroom, toilet etc."

A condition of this acceptance is that the fitting to be installed shall be replicas of the sample as certified by the testing agent mentioned above and without modifications. This acceptance may be withdrawn at any time if the standard of the fitting installed fail to meet that of the approved sample or if the fitting is found to be unsuitable for use in fresh water plumbing systems.

This acceptance is only applicable to the main body of the fitting, unless otherwise specified.

For the use of the fitting in any project, the General Acceptance Number of this letter must be quoted as a means of identification of acceptance of the fitting by this Authority.

Should you have any enquiries, please contact our Engineer Mr. Terry KUNG at tel. no. 3583 4086.

Yours faithfully,



(CHAN Chung-kun)

for Director of Water Supplies

Encl.

c.c.    WSD 3321/1/82    ] - without catalogue  
         ME/MC            ] - with soft copy only